

DESIGN/BUILD

ATG SPORTS

PROVIDING QUALITY FOR 30 YEARS

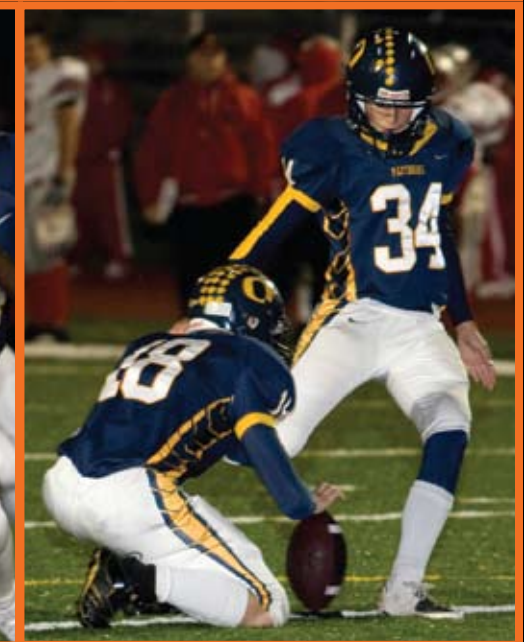
*ATG Sports Industries, Inc. breaks all records
by completing this project in 60 days!*

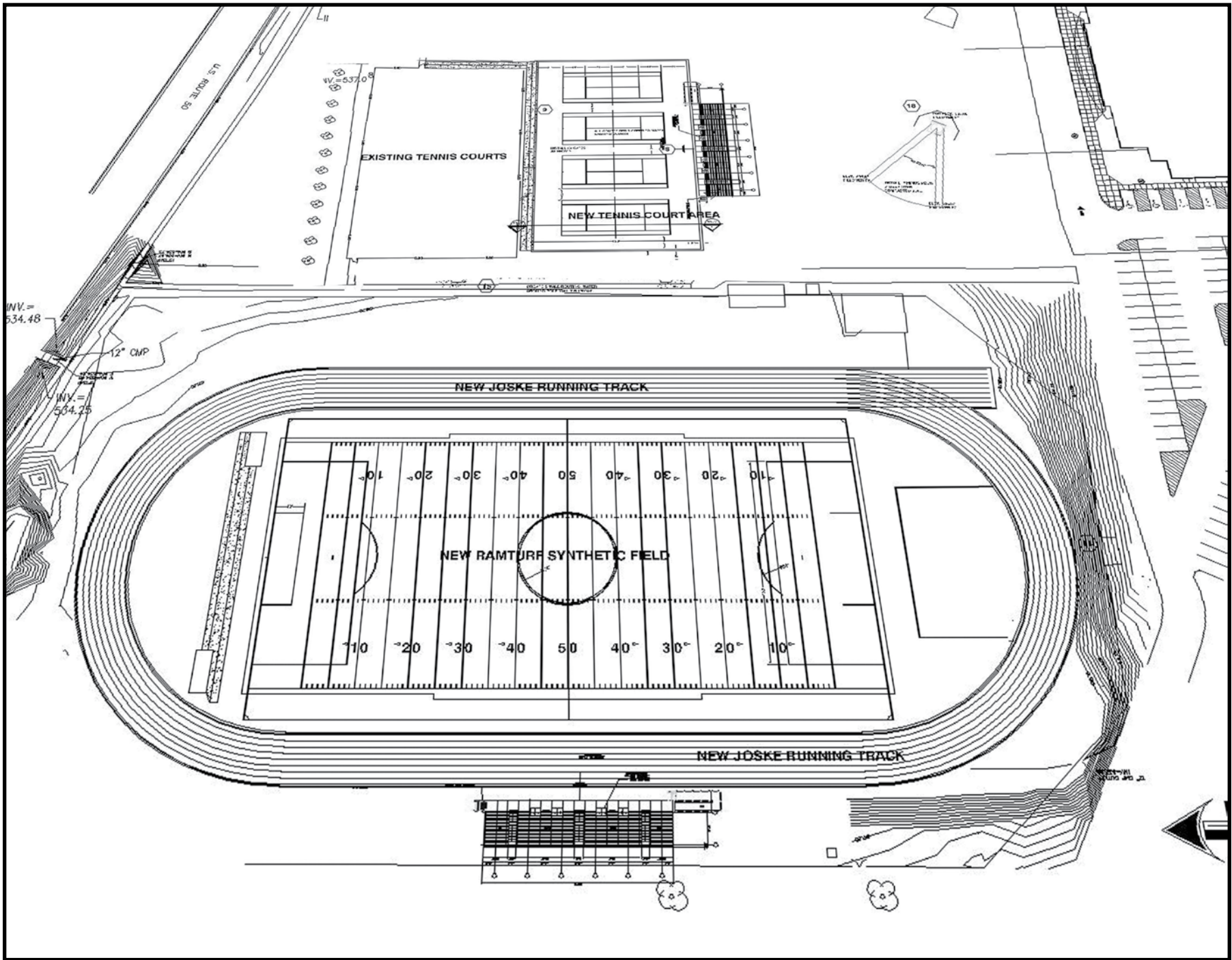


EARLY COMPLETION

ATG Sports completes the project ahead of schedule and ready for first home football game.

*O'Fallon holds it's first soccer practice and first football game after an early completion by **ATG Sports**.*







Aerial view of O'Fallon Field

© 2008 Srenco Photography

CONSTRUCTION

STARTING CONSTRUCTION

Before construction, **ATG Sports** reviewed the existing layout of the entire stadium. Plans were made to demolish the existing track and move the earth on the visitors side to allow more room for the new design to take shape. ATG Sports accepted the task of completing the entire stadium in 60 days to allow the school to host their first scheduled home football game.

Demolition began two days after the contract was signed. The home bleachers, press box, concession stand, track, lighting, fencing, and field events were removed. These structures were crumbled quickly and work progressed immediately on the new additions.



Previous home bleachers, press box and fence. The home bleachers accommodate only 1500 fans, with inadequate drainage system.

Running track with only 6 lanes, high jump and real grass field prior to demolition.

Piles of rubble are created from the demolition. These piles were removed and recycled and the empty skyline is revealed after the structures came tumbling down.





Drainable rock designed by ATG is installed on new multipurpose field. After the grass and dirt are leveled, a perimeter drainage system is put in place.

Grading for the expanded track and field take form. As the crane positions the press box, the grandstands are formed.

7:00 a.m. crews arrive on site to start installation of bleachers. Due to the short schedule ATG pulls out all stops by bringing in a crew of 10 people to speed up the installation time.

By 7:00 p.m. the same day, everyone is amazed by the production of the crews.

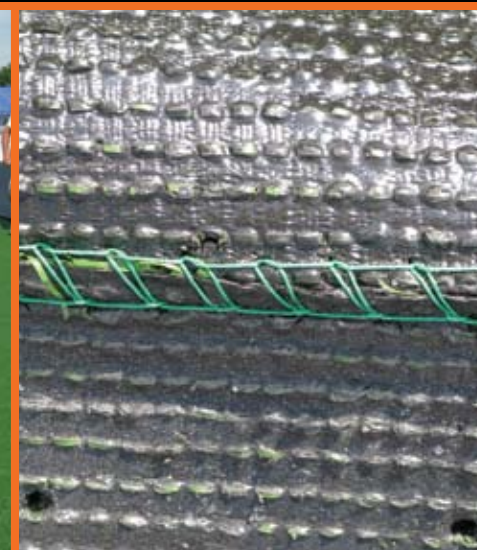
ATG Sports redesigns existing drainage system to provide a new storm sewer system that will allow for the site to drain up to 10 inches of rain per hour. This system allows for no cancellations.

New bleacher and press box are installed to accommodate 2500 home fans. These bleachers add seating for 1,000 more fans than the former bleachers.

20 DAYS CONSTRUCTION

30 DAYS CONSTRUCTION

Synthetic turf field is unveiled as crews install 50 yard line. Crews sew every seam with high strength yarn. Our crews work carefully to deliver an outstanding product for you to appreciate and enjoy.



*Each roll of synthetic turf is installed by hand. Lots of work and craftsmanship go into each and every field installed by **ATG Sports**. Lines are carefully matched and measured to ensure they are accurate and straight.*

Precision sewn high strength seam is prepared and ready for installation.

The new press box is carefully lifted by a crane and placed exactly. New light poles have been added.

We proudly display our project sign at each facility.





Track, Concession Stand/Restrooms and Tennis Courts were also added to this project.

ATG Designs and installs four new USTA Tennis Courts as part of the school's improvements.

Installation of asphalt for track begins.

Crews prepare sub grade to ensure courts meet all USTA elevation standards.

Crews compact base to prepare for installation of asphalt, tennis courts and concrete sidewalks.

The tennis courts are finished and ready for practice and matches.

Crews roll track to ensure all areas are smooth in preparation for Joske synthetic polyurethane track system. The track will have 8 lanes, instead of the original 6.

Crews start on block walls for restroom and concession stand.

Crews install roof on new restrooms and concession stand building.

40 DAYS CONSTRUCTION

50 DAYS CONSTRUCTION

All aspects of this project are taking shape and moving along smoothly. We pride ourselves in working with the schools and subcontractors to provide your project with the most time efficient manner possible. We stop at nothing to deliver the best service to you.

The concession and restrooms building is taking shape.

The new fence is standing and signs are displayed.

A truck dumps asphalt for crews to finish the base of the track.

Old glory waves behind the upright.

The finishing touches are added to the synthetic turf field and stadium.

Rubber infill is brushed in to allow for the turf fibers to stand up and for cushion for the athletes playability.

All the hash marks, soccer and end zone markings are completed.

The team name and the school names are added to the end zones of the synthetic turf field.

New scoreboard is in place and awaiting the games to begin.





Building is equipped with men's and women's restrooms, concession stand and storage area. New picnic tables are added outside.

Restrooms meet ADA requirements. This facility added an additional set of restrooms to accommodate large sports crowds.



ATG adds the finishing touches to the field and to the concession and restrooms building.

With days remaining before the first home football game, the field is nearing completion. The local newspaper ran numerous stories on this high profile project and feared it would not be ready in time for the first game. As promised, the job was finished with days to spare to allow practice on the synthetic turf before play action begins. With no time-outs left, the O'Fallon stadium gears up for the home opener.

COMPLETED PROJECT

COST SAVINGS

The soccer team prepares for the first practice on the new synthetic turf field. Our fields are ready to use right after installation is complete. The first home football game was played on the new synthetic turf.

The team enjoys their first of many practices on the synthetic turf field at their high school.

Team members proudly carry the soccer goals for the first time onto the new field. The team can hardly wait to begin practice.

O'Fallon created a schedule of events to compare the usage of the new ATG Sports synthetic turf versus real grass. For the first month, the schedule for synthetic turf actual usage was 234 hours. This includes PE classes, band practices, band camp, JV and Varsity football practices and games, JV and Varsity soccer practices and games and little league games.

If they still had real grass this year, only 25 hours for the first month would be allowed and those events include a limited number of football practices, all varsity only football games, a few band practices and band camp.



They also compiled a list of events for the full year and determined that 302 events are scheduled so far for the entire school year. This does not include daily PE classes (weather permitting) or any additional rental opportunities the school will encounter.

For a complete listing of these stats, please contact us at www.atgsports.com and click on the request info button.



ATC

S P O R T S

PROVIDING QUALITY FOR 30 YEARS





PROJECT OVERVIEW

It is truly amazing. This stadium was upgraded to a beautiful facility that the school and community are proud of. As you can see from the before and after pictures, the stadium improvements were spectacular. We want to

help your dreams become a reality, just as it was for O'Fallon Illinois.

From concept, to design and construction, we can be there you every step of the way.

Whether your project consists of some of these components or all of them, we can help you!

We want to transform your facility into something that everyone is proud of in your hometown.

ATG

S P O R T S

PROVIDING QUALITY FOR 30 YEARS

General Contracting

Design/Build Projects

Sports Field Construction

*ATG Sports Industries, Inc.
(316) 682-3997-Andover, Kansas*

*ATG Sports Industries, Inc.
(314) 843-3915-St. Louis, Missouri*

www.atgsports.com